

HD-PRO™ & HD-PRO™ 6.10.30

TRC TECHNOLOGY
RESEARCH
CORPORATION.

Heavy Duty - High Power GFCI/ELCIs

Configured for both in-line and bulk head mount. Engineered to trip within 25 milliseconds. Protects:

- ▶ Motors
- ▶ Pumping Systems
- ▶ Pressure Washers
- ▶ Manufacturing Equipment
- ▶ Welders
- ▶ Hoists

Has 2' of cable on both line and load side. To prevent equipment startup after GFCI trips, manual reset required. Will reset on power restoration following disruption of primary power. 6.10.30™ key enables trip level selection and locking at a trip level with key removal.

FEATURES

HD-Pro Series Model 24520

- ▶ Volts/Amps: 120V/60A
- ▶ Cord Gauge: 4/3 AWG.
- ▶ Trip Level: 10 mA
- ▶ Single Phase

Model 24530

- ▶ Volts/Amps: 240V/60A
- ▶ Cord Gauge: 4/3 AWG.
- ▶ Trip Level: 10 mA
- ▶ Single Phase

Model 25560

- ▶ Volts/Amps: 380V/60A
- ▶ Cord Gauge: 4/4 Awg.
- ▶ Trip Level: 30 mA
- ▶ Three Phase

HD-Pro 6.10.30's Model 24542

- ▶ Volts/Amps: 208-240V/60A
- ▶ Cord Gauge: 4/4 AWG.
- ▶ Trip Level: 6, 10 & 30 mA
- ▶ Three Phase

Model 24646

- ▶ Volts/Amps: 480V/30A
- ▶ Cord Gauge: 10/4 AWG.
- ▶ Trip Level: 6, 10 & 30 mA
- ▶ Three Phase

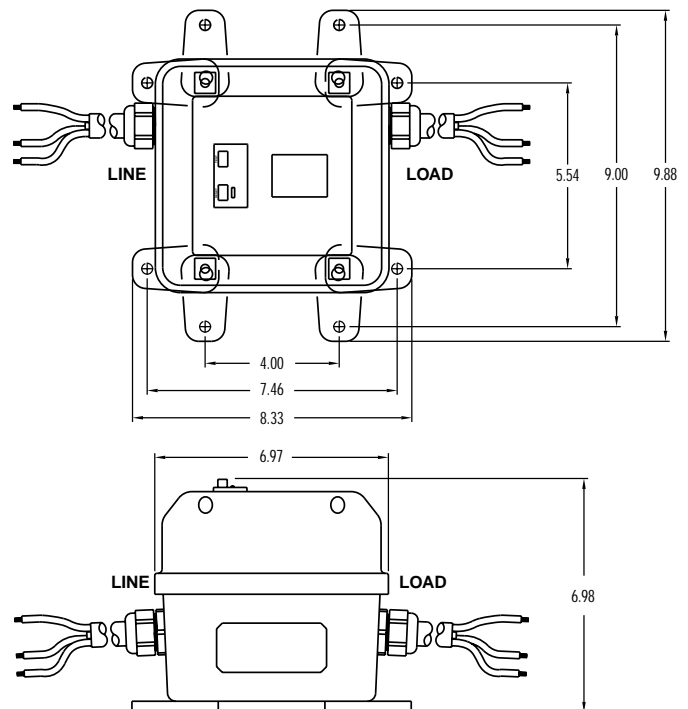
Model 24672

- ▶ Volts/Amps: 480V/60A
- ▶ Cord Gauge: 4/4 AWG.
- ▶ Trip Level: 6, 10 & 30 mA
- ▶ Three Phase



TECHNICAL DATA

Trip response time for ground fault	less than 25mS
Voltage surge withstand (MOV Protection)	3kv ringwave test and 4kv/2kA surge immunity test
Radio frequency noise susceptibility	operates within normal limits with 0.5 volts injected on power line 150-230 mHz
Frequency	50 / 60 Hz
Endurance	3,000 operations minimum
Overload Current	six times rated current
Operating temperature range	-35° C to 66° C
Effect of 10 Amp turn DC Shock on ground fault trip	5% maximum trip level variation
Insulation voltage	1500 VRMS - 1 Min.
Power On indication	lighted indicator



HD-Pro Series & HD-Pro 6.10.30's ◀ GFCI/ELCI